

angles on a straight line total 180°

right angle = 90° acute $< 90^\circ$

$180^\circ <$ reflex $< 360^\circ$



angles in a triangle total 180°

angles round a point total 360°

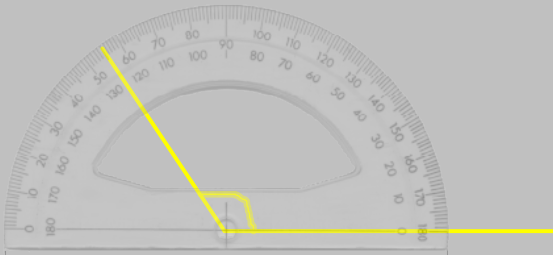
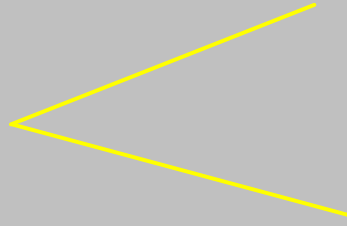
$90^\circ <$ obtuse $< 180^\circ$

**Take a piece of paper,
fold it in half to make a straight line,
and in half again**

page 69 A4

Measuring Angles (no angels please)

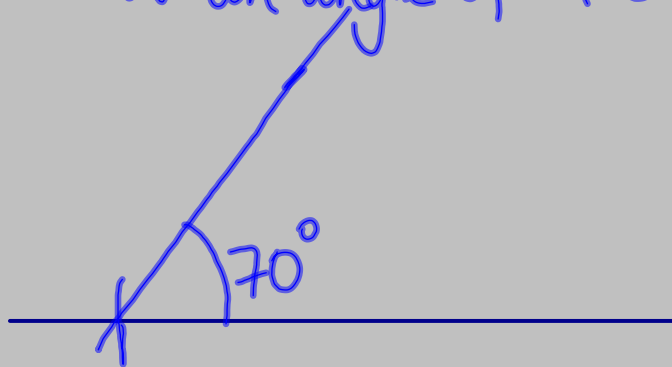
Types of Angle:



Draw a 70° angle

Drawing Angles

Draw an angle of 70°

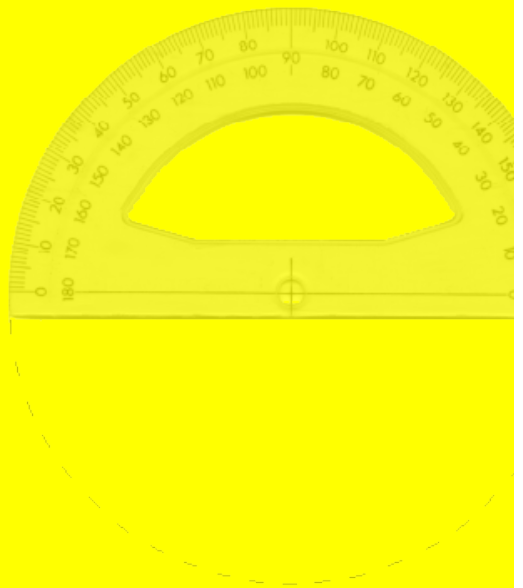
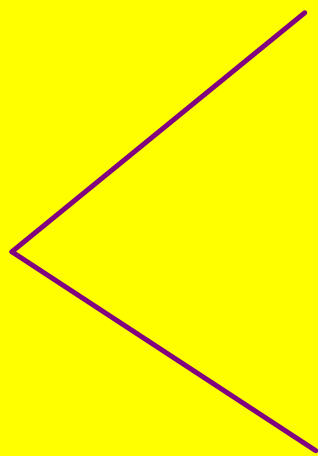


page 69 A4 onwards

Angles

size	my actual	fred's actual	my points	fred's points

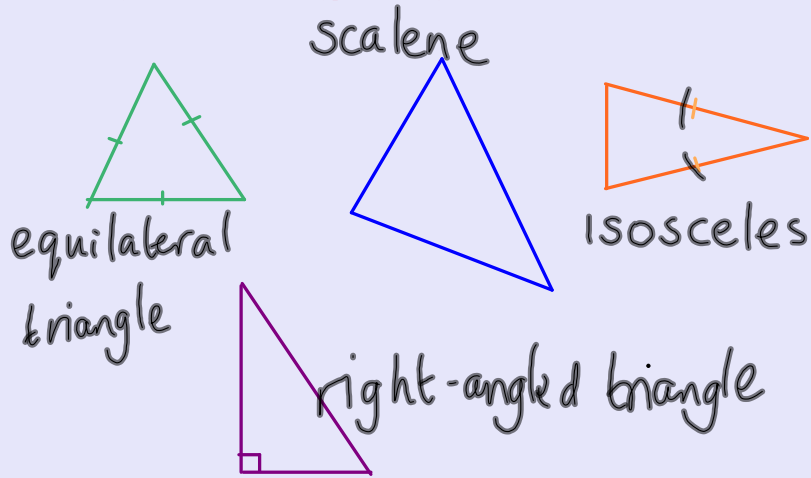
Reflex angles



page 70

Triangles

Can you name 4 different types of triangle?

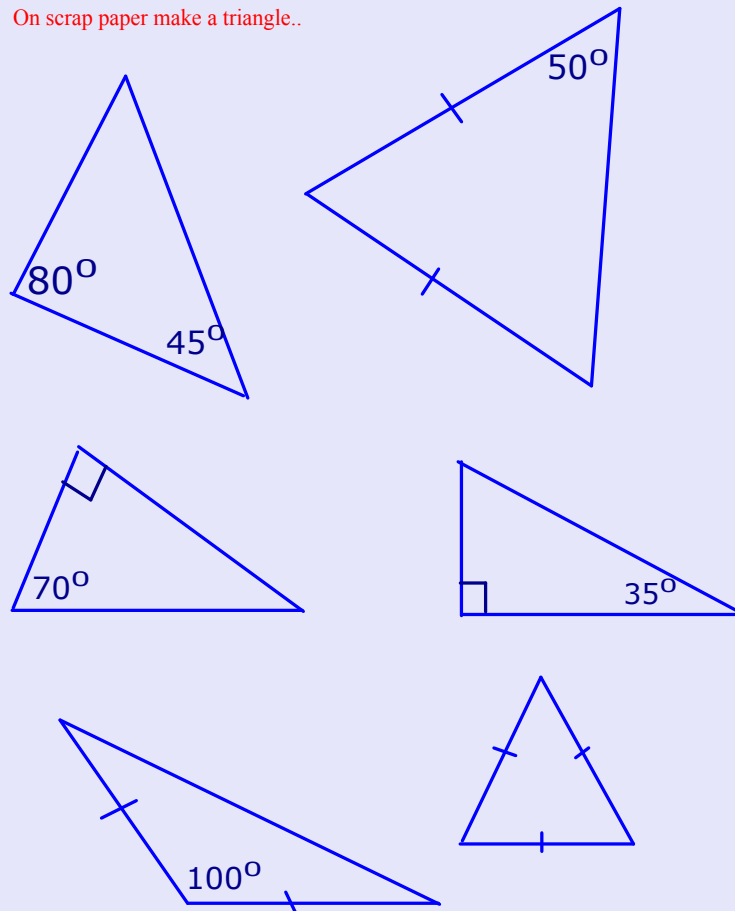


Angles in a triangle total 180°

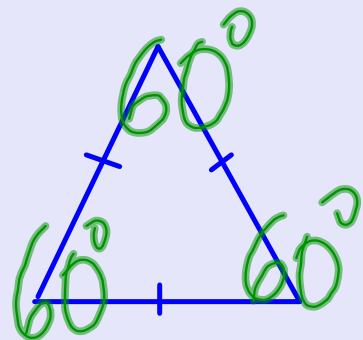
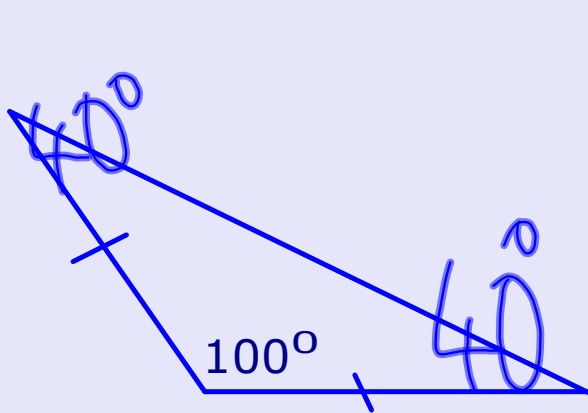
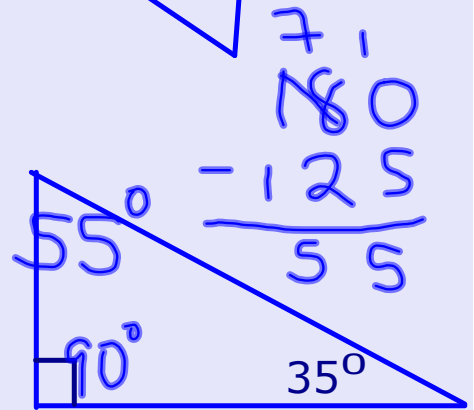
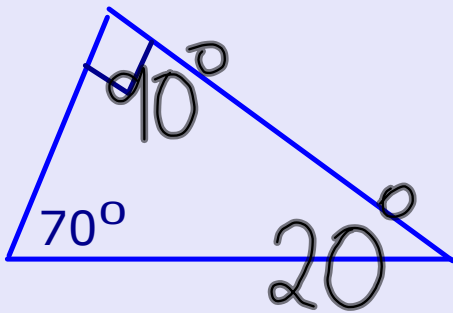
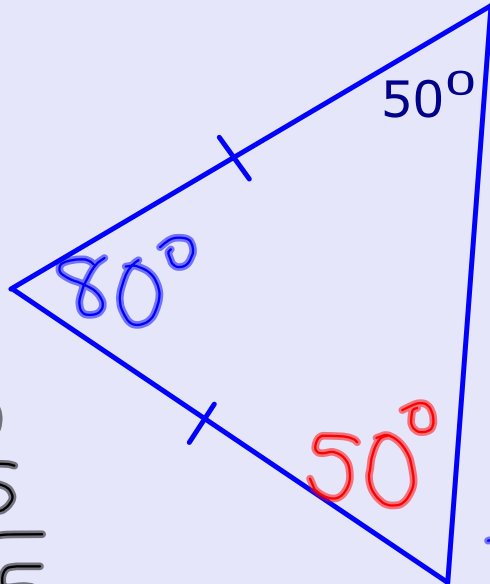
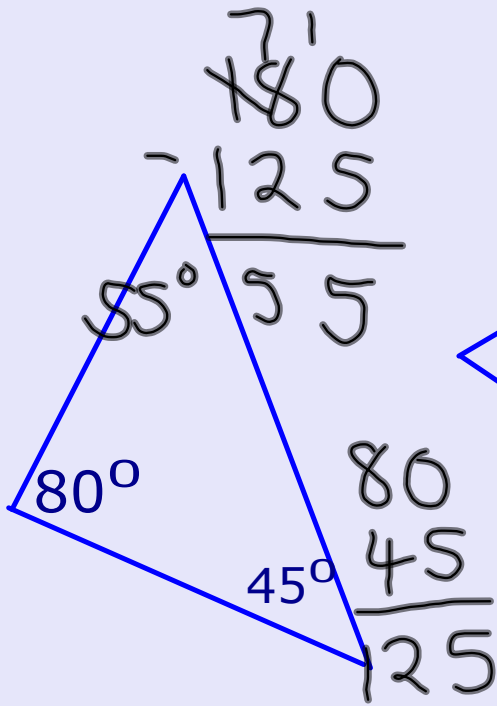
Angles in a triangle

Demonstrate on geometers sketchpad

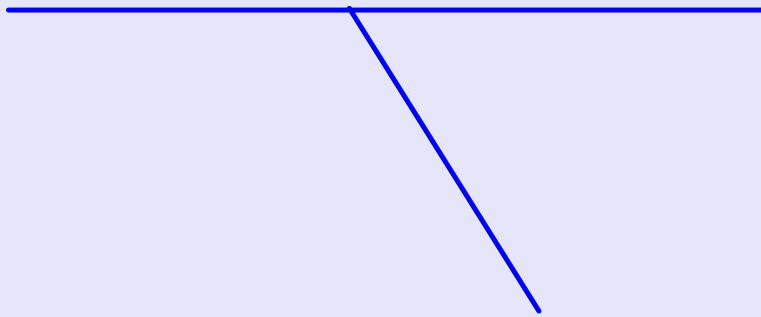
On scrap paper make a triangle..



Angles in a triangle



Angles and straight lines

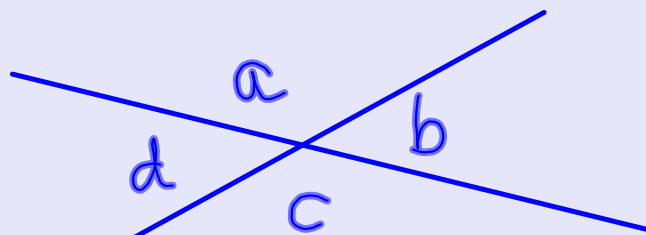


Angles on a straight line total...

Vertically opposite angles

In your book draw two intersecting lines.
Measure all 4 angles.

opposite
angles
are
equal



a=

b=

c=

d=

Quadrilaterals

Working in pairs how many different ones can you name and draw?



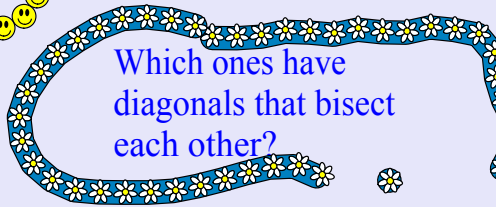
Which ones have parallel sides?



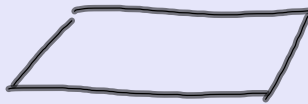
?



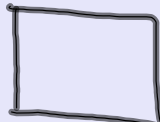
Which ones have right angles?



Which ones have diagonals that bisect each other?



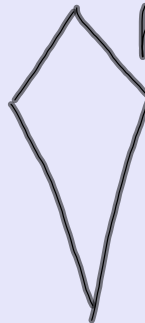
parallelogram



square



rectangle



kite

arrowhead



rhombus



trapezium



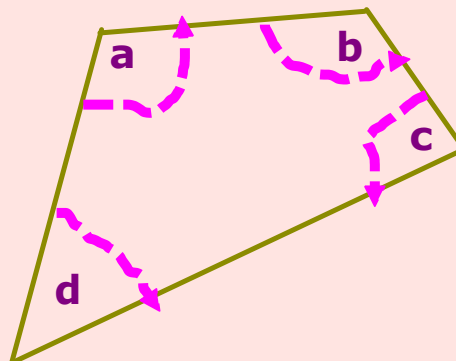
My quadrilateral

Stick here

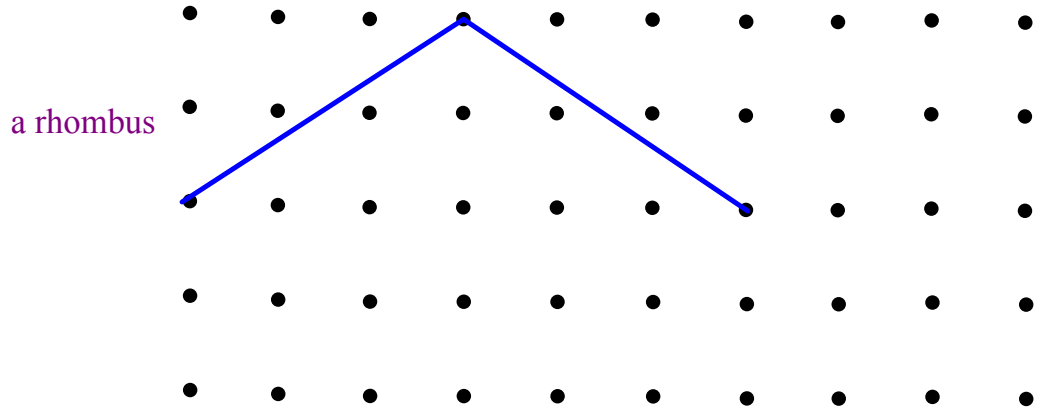
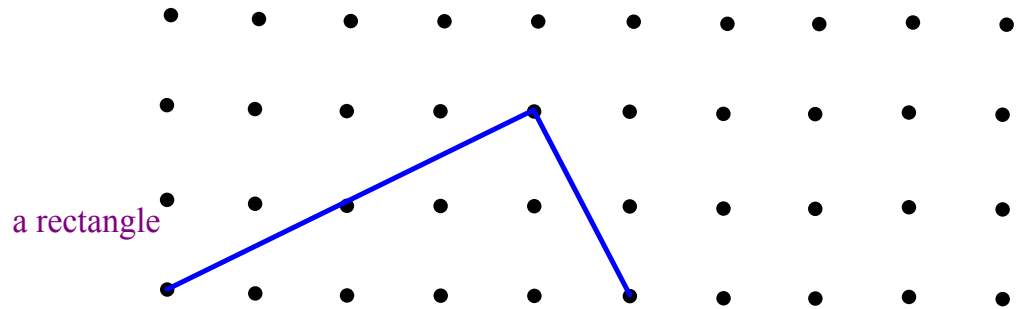
Angles in a quadrilateral add

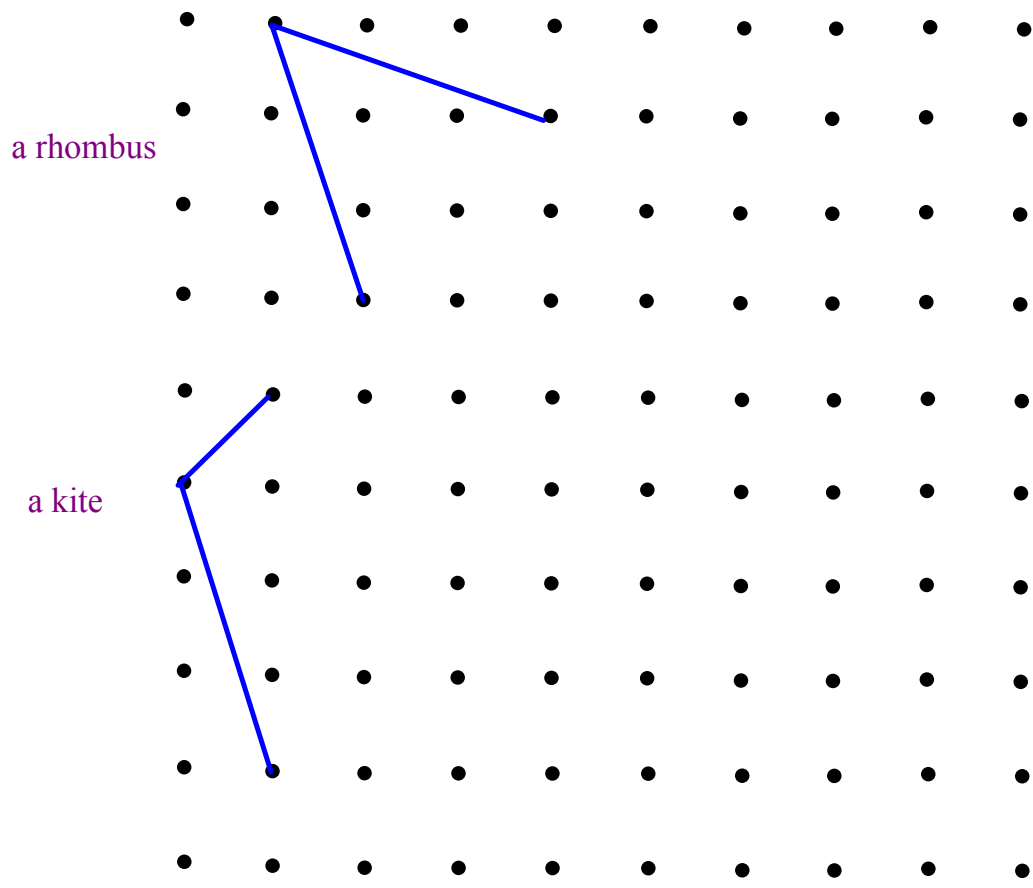
Quadrilaterals

On paper draw a quadrilateral. Mark the 4 angles a,b,c,d.
Tear them from the shape and put them together.

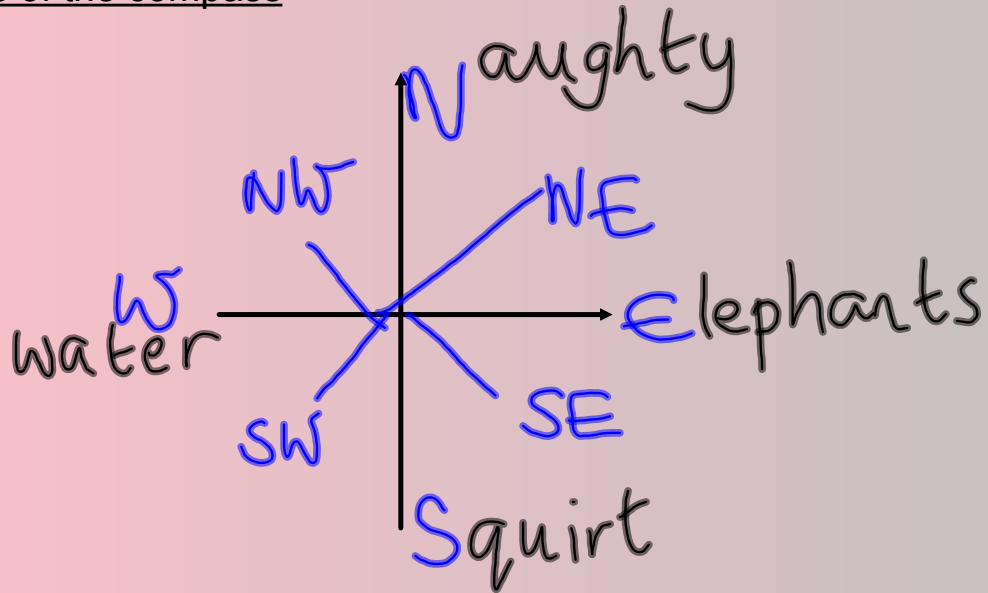


Tear along the
dotted lines!





Points of the compass



green book page 288

Either bearings sheet or
angle jigsaw.

Attachments

YR 7 SSM2.doc

angles.gsp

angles in polygons.ppt

Angle properties.gsp